

"Miami-Dade County Product Control Approved"
Hurricane Shutters and FBC Decorative Shutters
www.bsishutters.com Email: bsishutters@juno.com
Patent No: U.S. 6,996,934 B2 & 7,131,480 B2
2841 Shoreview Drive, Naples FL 34112
Office: 239-774-2025 Fax: 239-774-9483

Hurricane Shutter Systems - Bahama NOA: 09-0122.07 and Colonial NOA: 09-0122.08, Expiration Date: 11/28/2012
Decorative Shutter Systems - Tested and Certified - Florida Building Code TAS 203-94 and ASTM E1233-06

Installation Instructions: 6-Hinged Colonial Shutter

Tools required:

Cordless or elec. hammer drill w/ 5/16" nut driver or phillips head screwdriver, check fasteners provided
Tape measure, level, center punch, hammer, pencil, masking tape (to eliminate painting the pencil marks), and pilot drill bit depends on the type of fasteners provided

Items included:

All fasteners: Tap cons w/ drill bit, Lag bolts w/o drill bit, 1/4 x 20 Tap & 13/62 or #7 drill bit

Instruction Guide:

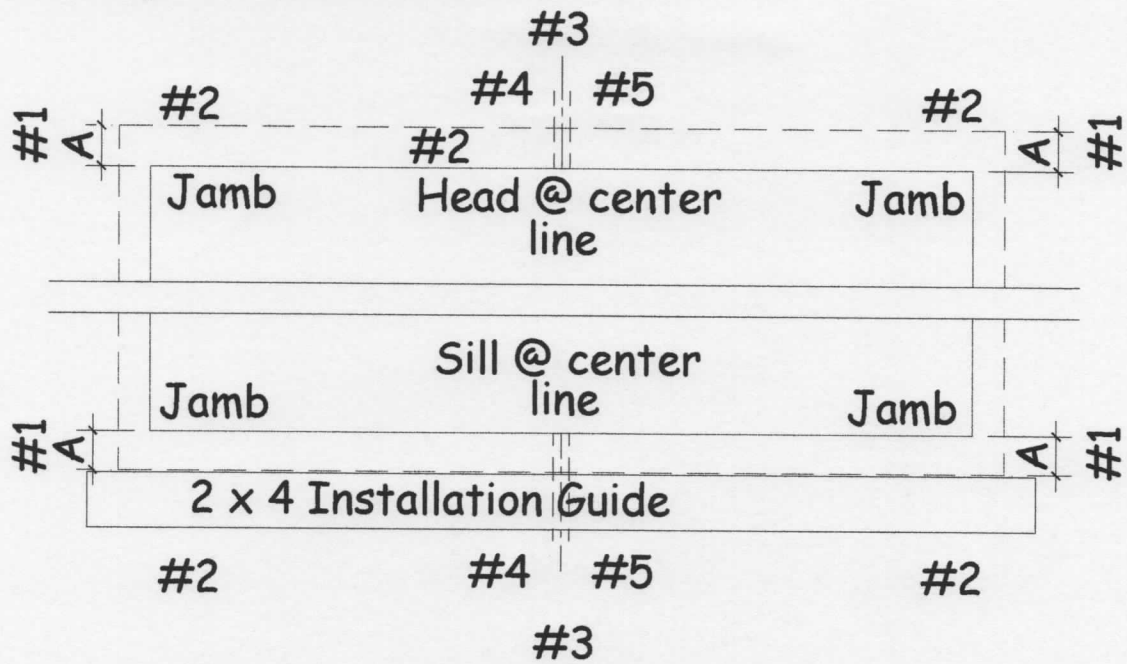
- #1 Subtract the window opening height from the shutter height, then divide that number by 2 for equal distance at the head & sill = "A", figure 1
Example - Window 36" high, shutter 38" high = 1" at the head & sill
- #2 Make a horizontal line with a pencil or masking tape, 4" long at both jambs & 8" long at the center of the opening, at the head & sill the distance calculated in #1, figure 1
- #3 Make a vertical line at the center of the window opening at the head & sill, figure 1 & 2
- #4 Make a vertical line 1/8" on the left side of the centerline at the head & sill,
- #5 Make a vertical line 1/8" on the right side of the centerline at the head & sill, distance between #4 & #5, minimum 1/4" clearance for shutters to open & close, figure 1 & 2
- #6 Left Shutter: Hold the right side of the left shutter even with line #4 (head & sill). Level the head of the shutter w/ mark #2, drill a hole at the top center hinge & install the screw, then drill one hole at the bottom center hinge & install one screw, figure 1 & 2
- #7 Right Shutter: Hold the left side of the right shutter even with line #5 (head & sill). Level across the top of both shutters w/ mark #2. Maintain the 1/4" gap between the shutter & drill one hole @ the top center hinge & install the screw, then drill one hole at the bottom center hinge & install one screw, figure 1 & 2
- #8 Open & close the shutter to insure the alignment, adjust if necessary, figure 2
- #9 Drill & screw the remaining holes at the hinges & install the screws, figure 2
- #10 Open the shutter, place hold open brackets at the desired location (head or sill), 1/4" below or above the shutter at the sill or head, drill both holes & install the screws. Repeat at the other shutter, figure 3
- #11 Mark and punch the center of the bracket, drill a hole w/ the 13/64 or #7 bit at the head or sill & tap w/ the 1/4 x 20 tap, install the 1/4" thumbscrew, figure 3
- #12 Remove the thumbscrew, close the shutter, place hold close brackets at the desired location (head or sill), 1/4" below or above the shutter at the sill or head, drill both holes & install the screws. Repeat at the other shutter, install the 1/4" thumbscrew, figure 4
- #13 Mark and punch the center of the bracket, drill a hole w/ the 13/64 or #7 bit at the head or sill & tap w/ the 1/4 x 20 tap, install the 1/4" thumbscrew, figure 4

Installing the Shutter with a 2 x 4 guide fastened to the wall at the bottom (sill), figure 1

Follow steps 1, 2, 3, & 4 above, mount a 2 x 4 at the sill where you want the bottom of the shutter (length of the 2 x 4, 4" longer then the shutter), place the shutter on the 2 x 4, fasten the shutter to wall, remove the 2 x 4, patch holes, and paint if necessary

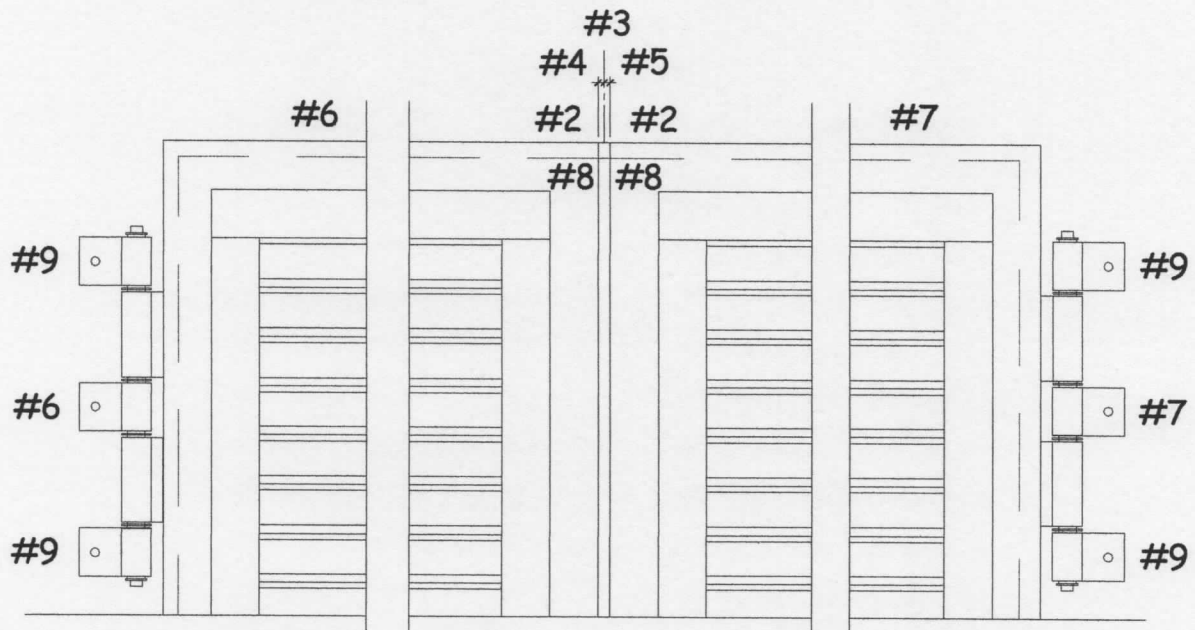
1 Hinged Colonial Shutter

Marking the Shutter Location



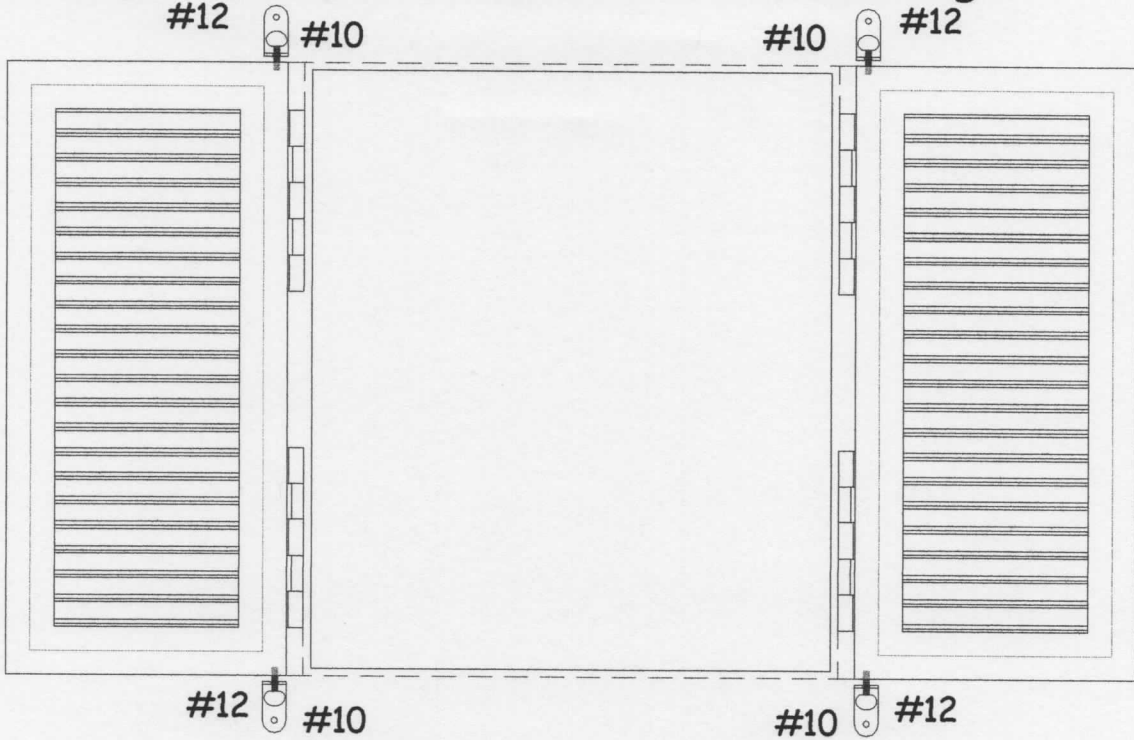
2 Hinged Colonial Shutter

Mounting Shutters to Building



3 Hinged Colonial Shutter

Mounting Hold Open Brackets to the Building



4 Hinged Colonial Shutter

Mounting the Hold Close Brackets to the Building

