

"Miami-Dade County Product Control Approved"
 Hurricane Shutters and FBC Decorative Shutters
www.bsishutters.com Email: bsishutters@juno.com
 Patent No: U.S. 6,996,934 B2 & 7,131,480 B2
 2841 Shoreview Drive, Naples FL 34112
 Office: 239-774-2025 Fax: 239-774-9483

Hurricane Shutter Systems - Bahama NOA: 09-0122.07 and Colonial NOA: 09-0122.08, Expiration Date: 11/28/2012
 Decorative Shutter Systems - Tested and Certified - Florida Building Code TAS 203-94 and ASTM E1233-06

Installation Instructions: 5-Hinged Bahama Shutter with Aluminum Build Out Frame

Tools required:

Cordless or elec. hammer drill w/ 5/16" nut driver or Phillips head screw driver, check fasteners provided, Level, Pilot drill bit depends on the type of fasteners provided

Items Included:

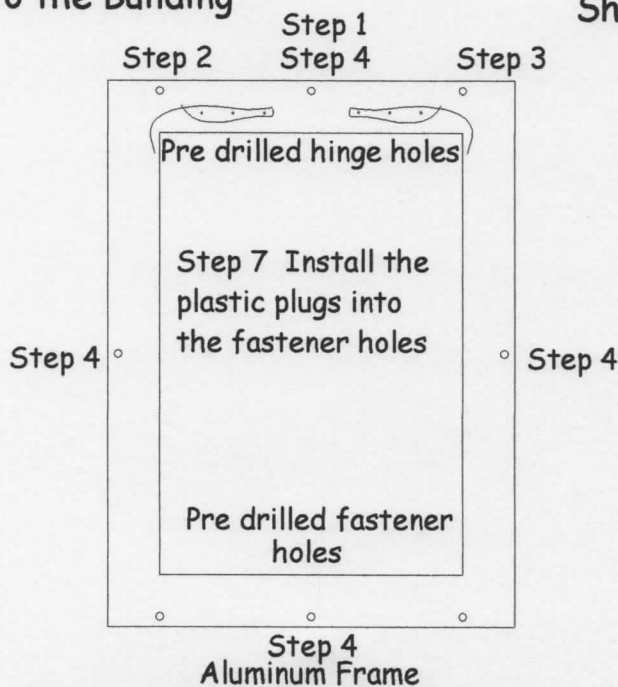
All Fasteners - tap cons w/ drill bit, Lag bolts w/o drill bit

Installation Guide:

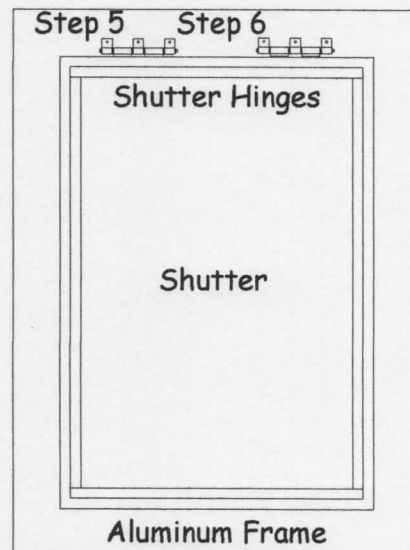
- #1 Position the aluminum frame on the building in the desired location, figure 1
- #2 Level the top of the aluminum frame, drill a pilot hole at the left fastener hole (predrilled) and screw the frame to the building, figure 1
- #3 Level the top, drill a pilot hole at the right fastener hole (predrilled) and screw the frame to the building, figure 1
- #4 Drill all the remaining holes & screw the aluminum frame to the building, figure 1
- #5 Install the plastic plugs into the face of the aluminum frame at the fastener holes, figure 1, 2, & 3
- #6 Screw the shutter hinges (pre-assembled to the shutter frame) to the aluminum frame, figure 1 & 2
- #7 Open the shutter and insert the hold open rod into the predrilled holes on the shutter frame and aluminum frame, figure 2 & 3

1-Hinged Bahama with Aluminum Build Out Frame

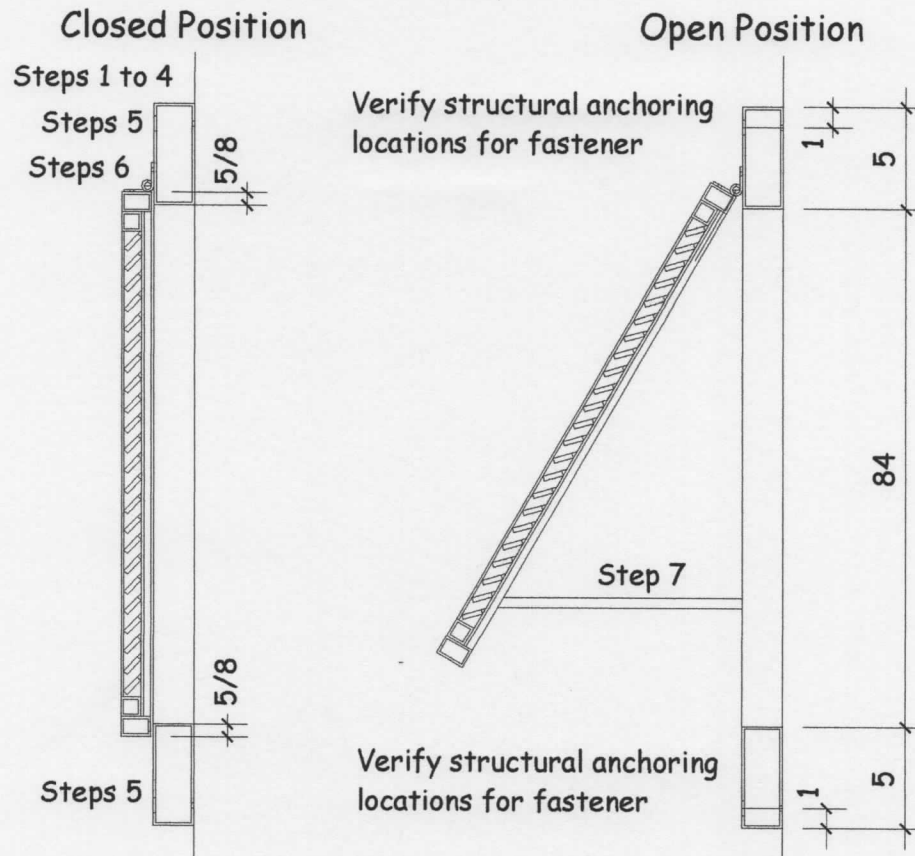
Mounting the Aluminum Frame to the Building



Shutter to Aluminum Frame



2-Hinged Bahama with Aluminum Build Out Frame



3-Hinged Bahama with Aluminum Build Out Frame

